

Demolition & Sorting Grabs

Multi Purpose Grabs

FOR EXCAVATORS UP TO
9T OPERATING WEIGHT



NEW

KINSHOFER GmbH

Hauptstrasse 76

83666 Waakirchen

Germany

Tel.: +49 (0)8021 – 88 99 0

Fax: +49 (0)8021 – 88 99 37

Email: info@kinshofer.com

www.kinshofer.com

KINSHOFER

your FULL-LINER

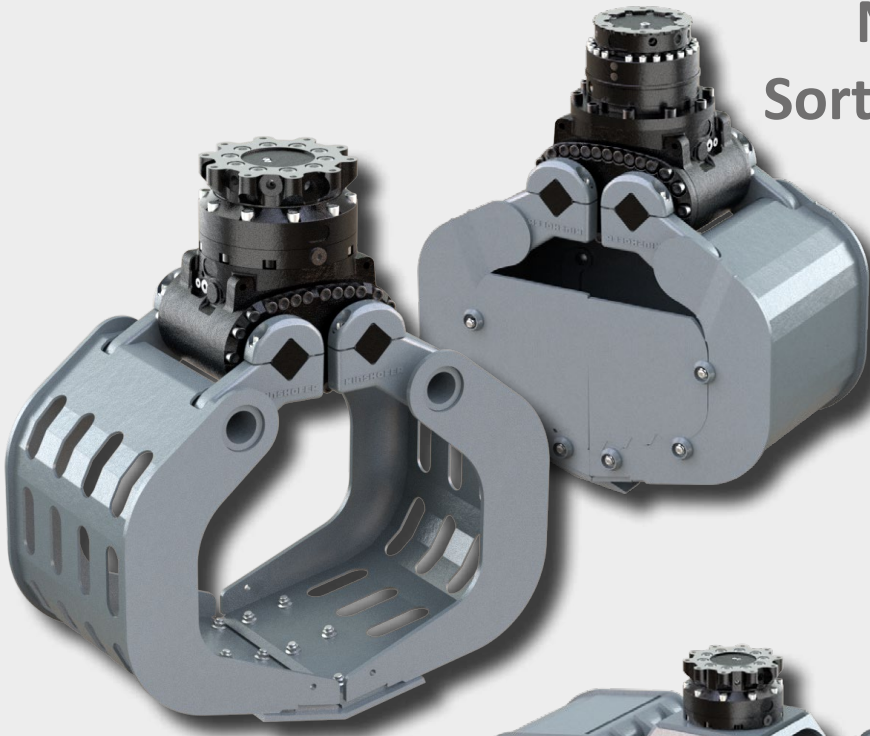


MAIN BENEFITS

- sophisticated shell design and kinematics for loading, sorting, digging and demolition operations
- rigid mount for precise positioning
- compact design without protruding elements
- each size available with or without *HPXdrive*
- low maintenance, easy shell exchange, no grease points, cylinders or short hoses with the *HPXdrive*
- including robust 10t or 15t rotator with low height and 360° endless rotation
- integrated non-return valves
- exchangeable teeth or cutting edges



NEW Multi Purpose and Sorting & Demolition Grabs



The basic attachment can be equipped with different accessories:

- side plates to handle small grained bulk material like sand and gravel
- adapter with compression rails to handle and position for example curbstones without damaging them





KINSHOFER

Setting *THE* Standard for Innovative Grab Technology for more than 40 years!



Demolition and Sorting Grabs up to 9t Operating Weight



D04HPX
2 - 4 METRIC TONS

Machine weight:
2,000 - 4,000 kg / 4,400 - 8,800 lb



D06HPX
3 - 6 METRIC TONS

Machine weight:
3,000 - 6,000 kg / 6,600 - 13,200 lb



D09HPX
6 - 9 METRIC TONS

Machine weight:
6,000 - 9,000 kg / 13,200 - 19,800 lb



D04H
2 - 4 METRIC TONS

Machine weight:
2,000 - 4,000 kg / 4,400 - 8,800 lb



D06H
3 - 6 METRIC TONS

Machine weight:
3,000 - 6,000 kg / 6,600 - 13,200 lb



D09H
6 - 9 METRIC TONS

Machine weight:
6,000 - 9,000 kg / 13,200 - 19,800 lb



Multi Purpose Grabs up to 9t Operating Weight



A04HPX
2 - 4 METRIC TONS

Machine weight:
2,000 - 4,000 kg / 4,400 - 8,800 lb



A06HPX
3 - 6 METRIC TONS

Machine weight:
3,000 - 6,000 kg / 6,600 - 13,200 lb



A09HPX
6 - 9 METRIC TONS

Machine weight:
6,000 - 9,000 kg / 13,200 - 19,800 lb



A04H
2 - 4 METRIC TONS

Machine weight:
2,000 - 4,000 kg / 4,400 - 8,800 lb



A06H
3 - 6 METRIC TONS

Machine weight:
3,000 - 6,000 kg / 6,600 - 13,200 lb



A09H
6 - 9 METRIC TONS

Machine weight:
6,000 - 9,000 kg / 13,200 - 19,800 lb



back to www.kinshofer.com
Demolition and Sorting Grabs up to 9t